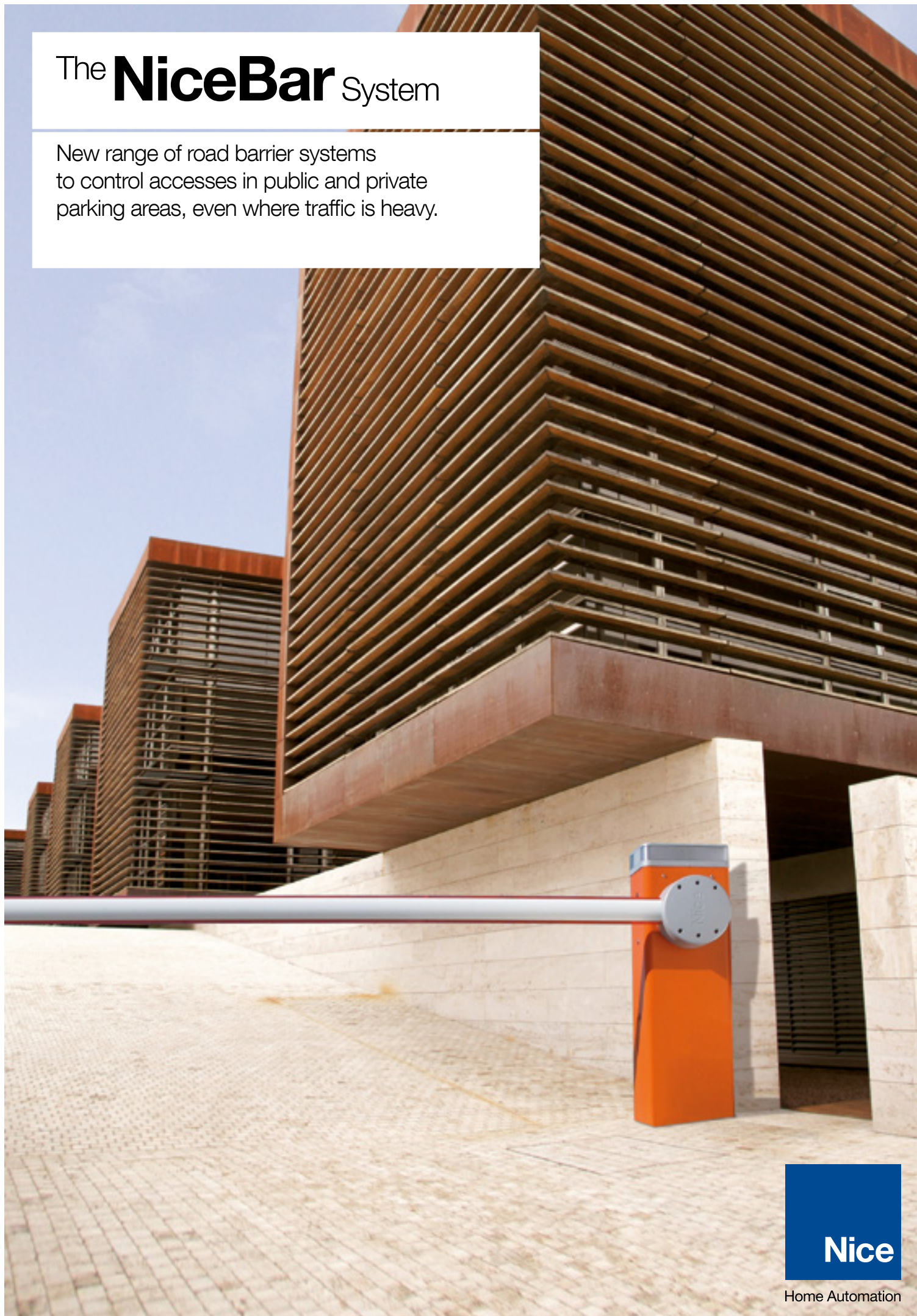


The **NiceBar** System

New range of road barrier systems
to control accesses in public and private
parking areas, even where traffic is heavy.



Nice

Home Automation

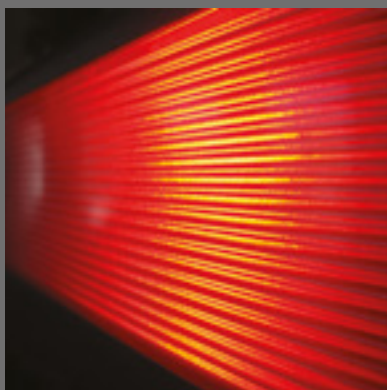


L/M Bar **Barrier gate operators for all sizes**

New range of barrier gate operators to control road access to car parks, private and condominial transit areas, including high traffic ones.

Powerful and fast: 3 models with modular bars from 4 to 9 m.

Easy transport and optimised management in the warehouse.



Safe

Integrable flashing or traffic light.
Nightlight function for on-site lighting. Vandal-proof thanks to the tough aluminium case.

Nice Road Barrier

High performing, reliable and durable.
Elegant, streamlined design.
Carefully selected materials.
Greater convenience, safety at all times.



Solemyo System

Solemyo solar power kit for the automation of gates, garage doors and barriers even a long way from electricity supplies, with no need for expensive, unsightly trench digging.



Opera System

For user-friendly, safe control, programming and monitoring of automation systems, with impressive time savings.



BlueBUS

The BlueBUS system allows connection of all system devices using just two wires. Quick installation and easy updating at any time!



Elliptical section bar
with high resistance
to gusts of wind.
Led signal lights.



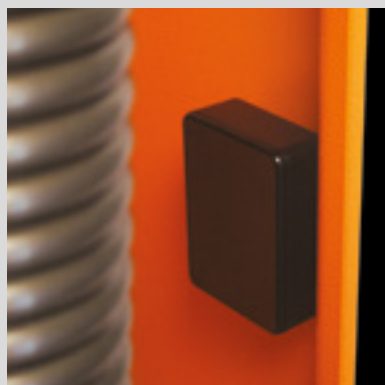
User-friendly compact design

Quick and easy access to internal components with separate enclosures for electronics and mechanics to protect from potential risks. The control unit, located in the upper part of the barrier body, can be reached by simple removing the cover.



Intelligent

Photocells can be fitted in the specially designed seats in the inner part of the barrier body. Integrated loop detector management.



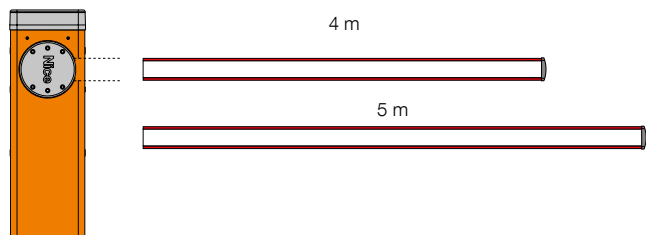
Power and reliability

New high resistance balancing springs guarantee up to 1,000,000 operations. Powerful and fast 24 Vdc gearmotor. Maximum protection: steel housing with protective cataphoresis treatment and paint finish.



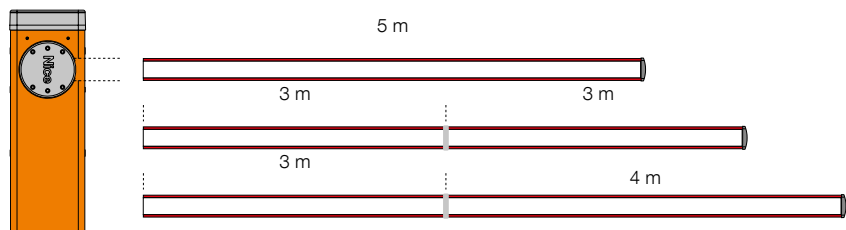
Integrated solutions for all requirements





M5BAR/V1

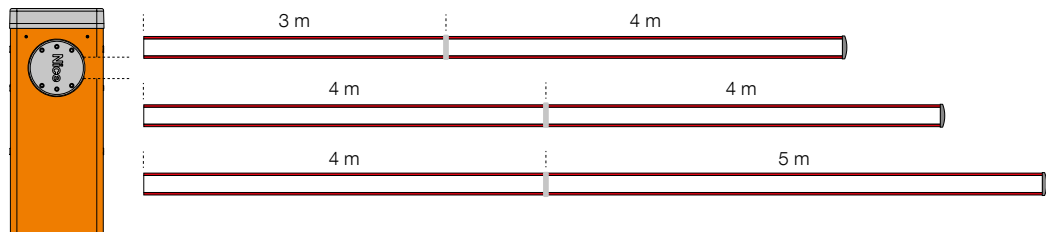
- **With 4 m bar**
Provision for:
protective rubber trim,
indicator lights,
rack, mobile stand
- **With 5 m bar**
Provision for:
protective rubber trim
and indicator lights



M7BAR/V1

- **With 5 m bar**
Provision for:
protective rubber trim, indicator lights,
rack, mobile stand
- **With bar up to 6 m (3+3 m)***
Provision for:
protective rubber trim, indicator lights,
rack, mobile stand
- **With bar up to 7 m (3+4 m)***
Provision for:
protective rubber trim
and indicator lights

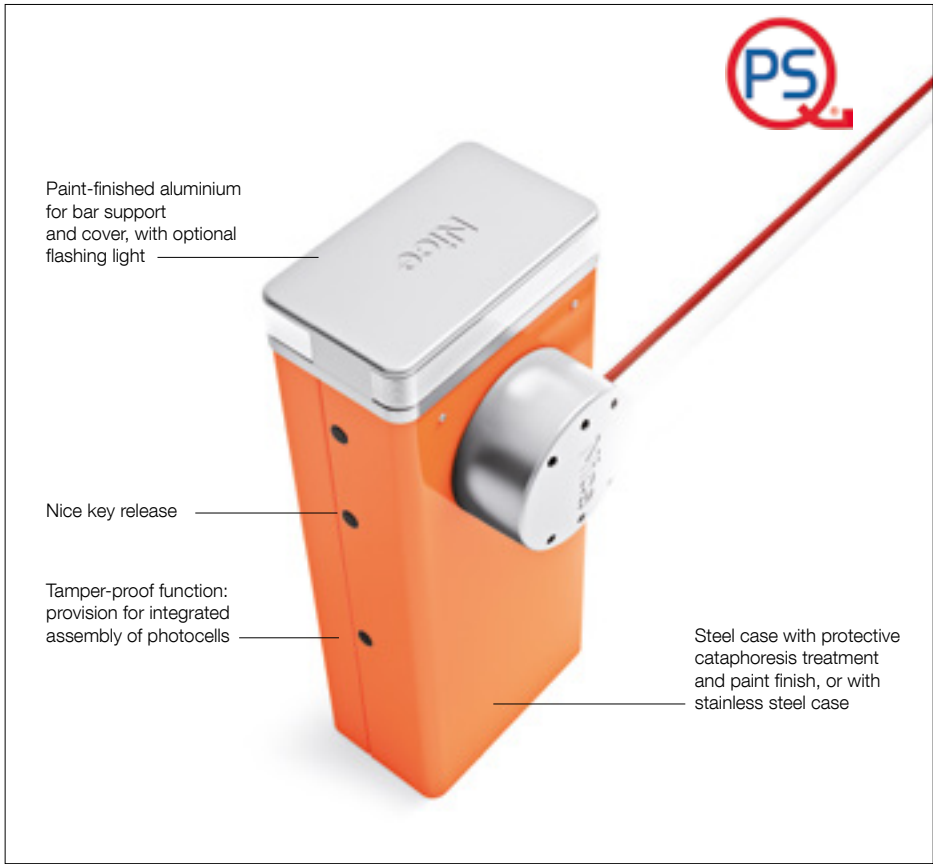
*Use XBA9 joint to assemble bars



LBAR/V1

- **With bar of 7 m (3+4 m)***
Provision for:
protective rubber trim, indicator lights,
rack, mobile stand
- **With bar of 8 m (4+4 m)***
Provision for:
protective rubber trim, indicator lights,
rack, mobile stand
- **With bar of 9 m (4+5 m)***
Provision for:
protective rubber trim
and indicator lights

*Use XBA9 joint to assemble bars



For bars up to 9 m, irreversible 110 Vac, 24 Vdc motor, with foundation plate:

Code	Description
LBAR/V1	With steel case with protective cataphoresis treatment and paint finish

Electromechanical road barrier system for control of road access.
24 Vdc gearmotor with built-in control unit and loop detector.

Powerful and fast, for bars from 7 to 9 m.

Modular: are easily assembled using the aluminium expansion joint.

Possibility for intelligent control of two opposing automations thanks to **“master/slave” function.**

Strength and reliability: robust structure in steel, new high strength balancing springs guaranteed up to 1,000,000 opening and closing operations and elliptical section bar with high wind-gust resistance.

Optional flashing or traffic light can be integrated in cover.

Encoder movement control and electromechanical limit switches.

More comfort and safety in programming and maintenance phases: the separate enclosures for electronics and mechanics protect internal parts from potential risks.

Rapid and easy access to the control unit located in the upper section of the barrier body.

Simple fixture of the completely concealed photocells onto the specially designed seats on the barrier body.

More safety and reliability: obstacle detection and monitoring of motor absorption during automation movement.

Automatic fault diagnostics during operation with consequent signalling of fault type through specific flash sequences.

Provision for connection of latest generation optical and resistive sensitive edges (with 8.2 KOhm resistance).

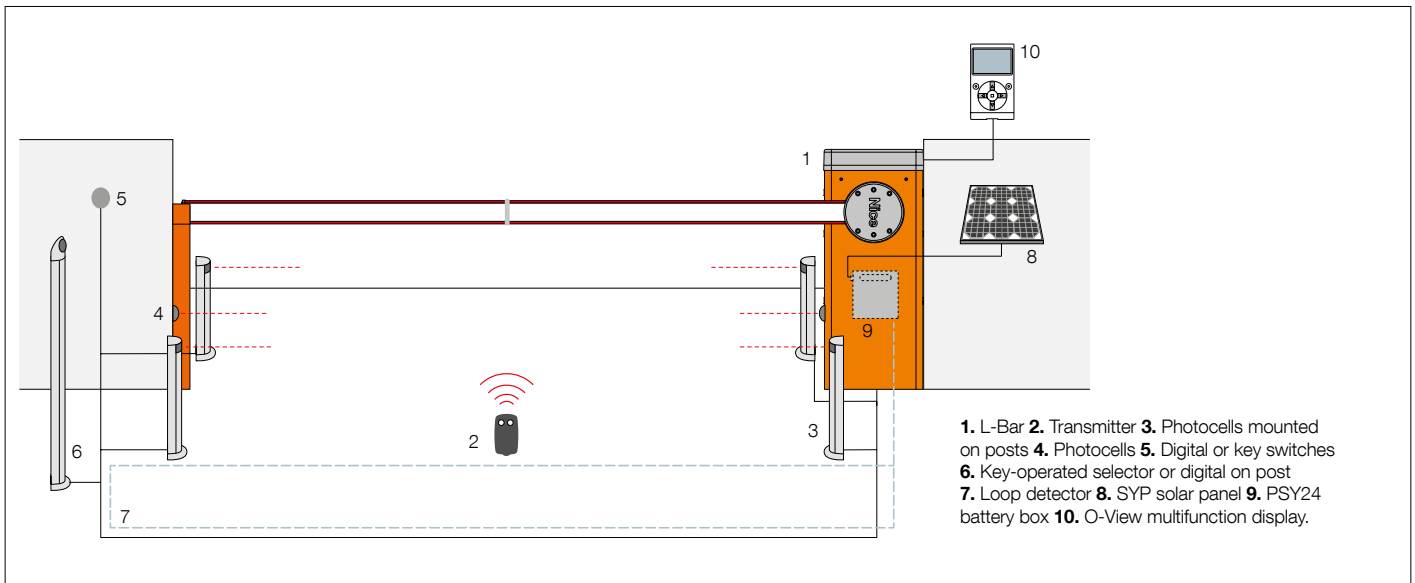
Energy saving: the system sets to standby when not in use to save consumption.

No blackouts: emergency backup power with the optional batteries housed inside the case.

Side release with metal key, can be installed on either side.

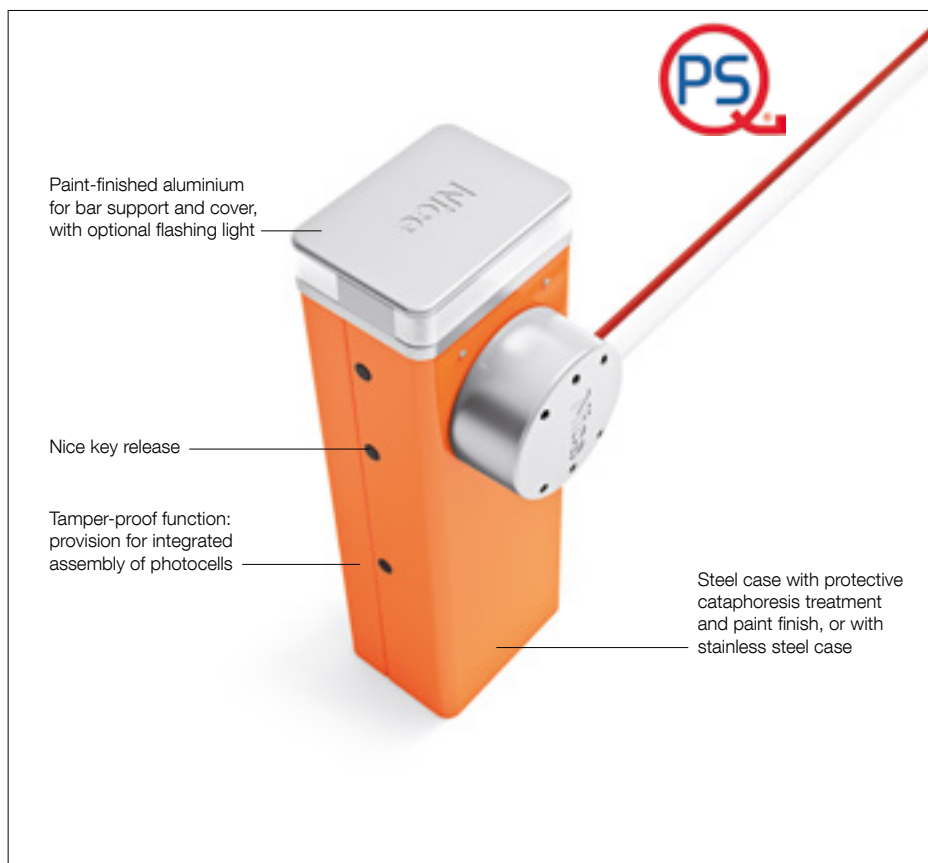
Technical specifications

	LBAR/V1
Code	LBAR/V1
Electrical data	
Power supply (Vac 50/60 Hz)	110
Power supply (Vdc)	24
Absorption (A)	1.3
Power (W)	160
Performance data	
Speed (s)	8 ÷ 12
Torque (Nm)	400
Work cycle (cycles/hour)	150
Dimensional and general data	
Protection level (IP)	54
Working temp. (°C Min/Max)	-20 ÷ +55
Dimensions (mm)	500x299x1215 h
Peso (kg)	98



Accessories

Code	Description
XBA3HF	Spare control unit
PS224	24 Vdc buffer battery
XBA15	White paint-finished aluminium bar 69x92x3150 mm
XBA14	White paint-finished aluminium bar 69x92x4150 mm
XBA5	White paint-finished aluminium bar 69x92x5150 mm
XBA9	Expansion joint
XBA13	Rubber impact protection strip. Length 1 m
WA10	Red adhesive reflector strips
XBA18	Indicator lights for click fixture on upper or lower side of bar. Length 8 m
XBA8	Integrable traffic light
XBA7	Integrable flashing light
WA13	Aluminium rack up to 2 m
XBA17	Anchorage base with clamps, for LBAR
WA12	Mobile stand for bars - <i>New fully reinforced version</i>
WA11	Adjustable stand for bars



Electromechanical road barrier system for control of road access.

24 Vdc gearmotor with built-in control unit and loop detector.

For bars up from 4 to 7 m.

Modular: are easily assembled using the aluminium expansion joint.

Possibility for intelligent control of two opposing automations thanks to **“master/slave” function**.

Strength and reliability: robust structure in steel, new high strength balancing springs guaranteed up to 1,000,000 opening and closing operations and elliptical section bar with high wind-gust resistance.

Optional flashing or traffic light can be integrated in cover.

Encoder movement control and electromechanical limit switches.

More comfort and safety in programming and maintenance phases: the separate enclosures for electronics and mechanics protect internal parts from potential risks.

Rapid and easy access to the control unit located in the upper section of the barrier body.

Simple fixture of the completely concealed photocells onto the specially designed seats on the barrier body.

More safety and reliability: obstacle detection and monitoring of motor absorption during automation movement.

Automatic fault diagnostics during operation with consequent signalling of fault type through specific flash sequences.

Provision for connection of latest generation optical and resistive sensitive edges (with 8.2 KOhm resistance).

Energy saving: the system sets to standby when not in use to save consumption.

No blackouts: emergency backup power with the optional batteries housed inside the case.

Side release with metal key, can be installed on either side.

With bar up to 4 or 5 m, irreversible 110 Vac, 24 Vdc motor, with foundation plate:

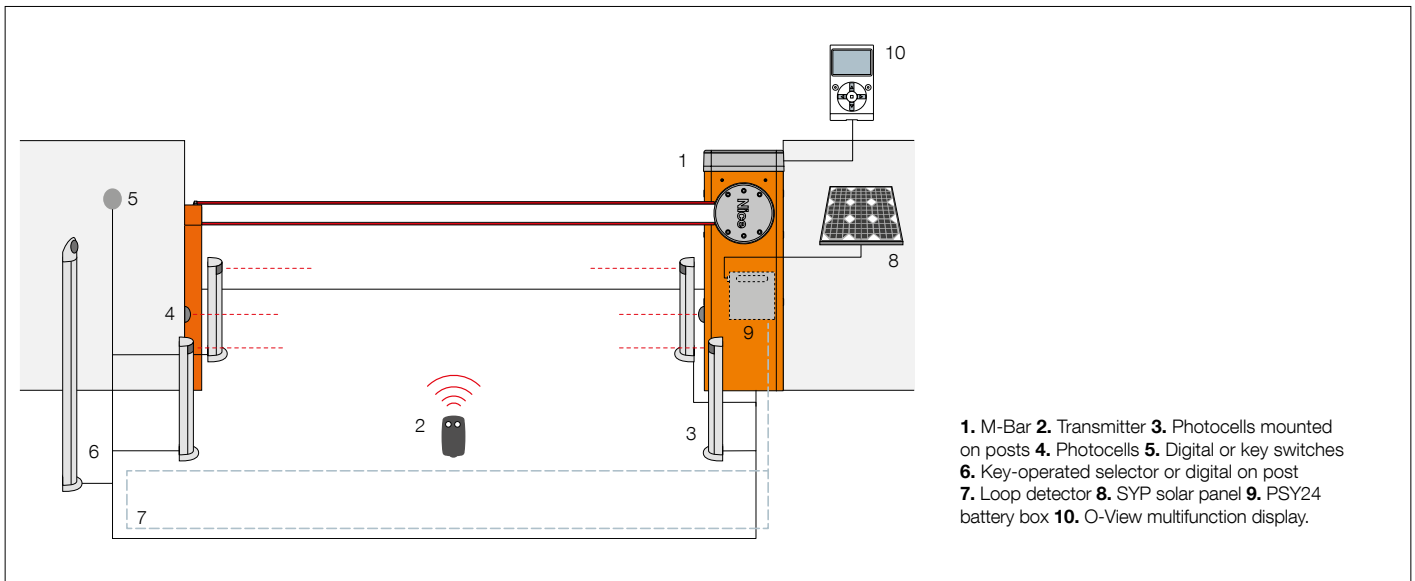
Code	Description
M5BAR/V1	With steel case with protective cataphoresis treatment and paint finish

With bar up to 5, 6 or 7 m, irreversible 110 Vac, 24 Vdc motor, with foundation plate:

Code	Description
M7BAR/V1	With steel case with protective cataphoresis treatment and paint finish

Technical specifications

Code	M5BAR/V1	M7BAR/V1
Electrical data		
Power supply (Vac 50/60 Hz)	110	
Power supply (Vdc)	24	
Absorption (A)	1.1	
Power (W)	110	
Performance data		
Speed (s)	3 ÷ 6	6 ÷ 10
Torque (Nm)	200	300
Work cycle (cycles/hour)	450	200
Dimensional and general data		
Protection level (IP)	54	
Working temp. (°C Min/Max)	-20 ÷ +55	
Dimensions (mm)	400x299x1215 h	
Peso (kg)	80	85



Accessories for M5BAR/V1, M7BAR/V1

Code	Description
XBA3HF	Spare control unit
PS224	24 Vdc buffer battery
XBA13	Rubber impact protection strip. Length 1 m
WA10	Red adhesive reflector strips
XBA8	Integrable traffic light
XBA7	Integrable flashing light
XBA16	Anchorage base with clamps, for MBAR
WA11	Adjustable stand for bars

Accessories for M5BAR/V1

Code	Description
XBA14	White paint-finished aluminium bar 69x92x4150 mm
XBA5	White paint-finished aluminium bar 69x92x5150 mm
XBA4	Indicator lights for click fixture on upper or lower side of bar. Length 4 m
XBA6	Indicator lights for click fixture on upper or lower side of bar. Length 6 m
XBA10	Pivoting connection for bars up to 4 m
XBA11	Joint for bars XBA14
WA12	Mobile stand for bars - <i>New fully reinforced version</i>
WA13	Aluminium rack up to 2 m

Accessories for M7BAR/V1

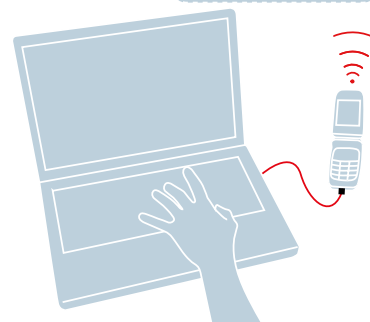
Code	Description
XBA15	White paint-finished aluminium bar 69x92x3150 mm
XBA14	White paint-finished aluminium bar 69x92x4150 mm
XBA5	White paint-finished aluminium bar 69x92x5150 mm
XBA9	Expansion joint
XBA6	Indicator lights for click fixture on upper or lower side of bar. Length 6 m
XBA18	Indicator lights for click fixture on upper or lower side of bar. Length 8 m
WA12	Mobile stand for bars - <i>New fully reinforced version</i>
WA13	Aluminium rack up to 2 m

Nice Opera Control System

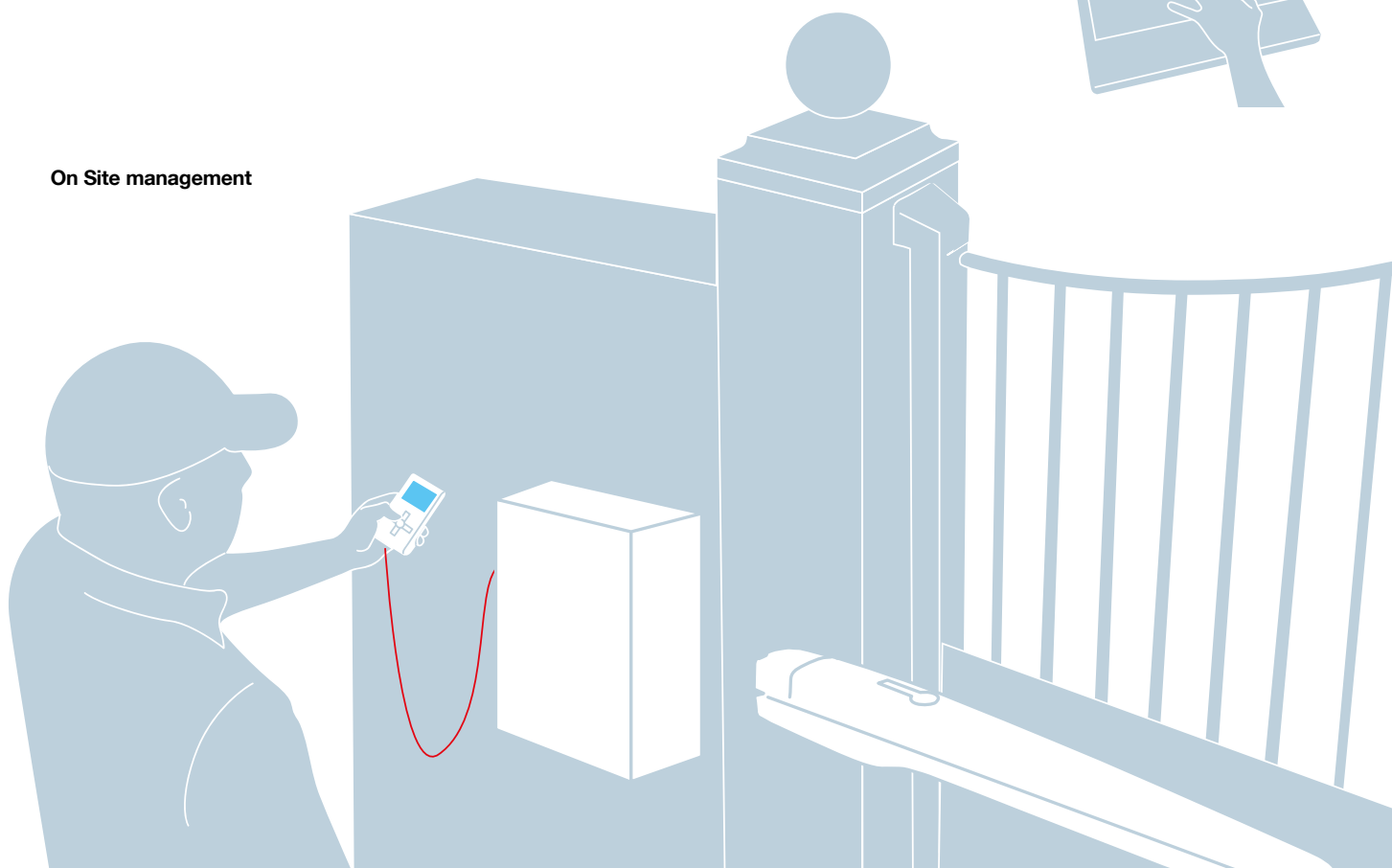
Advanced management of automations, also remotely.

Nice presents the innovative Opera System that enables the installer to manage, program and control automations also remotely, simply and safely, with significant savings in time.

Remote management



On Site management



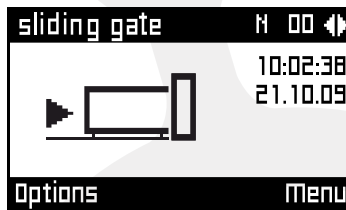
Nice Opera simplifies the installer's work, making easier programming and enabling access to all control panel parameters, to adapt the system to all requirements. No specific procedures needed for each product: single programming mode with intuitive menus, with no need to consult instructions.

Constantly efficient assistance for all customers: the Opera System simplifies the programming **by means of the O-View multifunction display** which, when connected directly to the control units compatible with Opera System via BUS T4, enables full access to the system functions, for practical, rapid and advanced programming.

Intuitive, user-friendly graphics

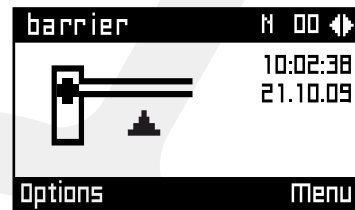


Gates



Options

Menu



Barrier gates



Software
"O-View Software Suite"



OVB TGSM

Bluetooth + GSM

Bluetooth

OVB T



<<< BUS T4

O-View, multifunction display: control, programming and diagnostics unit for devices equipped with BUS T4 connection, **on site or remotely via GPRS** thanks to the connection with your PC.



BUS T4 is the innovative communication protocol that enables you **to create extensive networks** of compatible automation systems, **managing them from a single point via O-View**.

Device management can be protected by two password levels. By interfacing the system with the PC, you can control a complex automation system such as in hospitals, hotels, companies, etc.



Unit for control, programming and diagnostics for devices equipped with BUS T4 connection, on site or remotely via GPRS thanks to the connection with your PC.

Advanced management of automation systems on site or remotely: the multifunction display O-View is connected directly to the compatible control unit via a BUS T4 cable (supplied), enabling access to all control unit parameters to adapt the system to all needs. By connecting O-View permanently to a control unit or group of control units via BUS T4, a network can be created for local or remote centralized management.

Simple programming mode with intuitive menus valid for each product, with no need to consult the specific instructions. O-View powers up and automatically recognizes all devices on the network as soon as it is connected, displaying only the specific parameters of the device on which to intervene.

In the case of several devices on the network the BUS T4 address is identifiable by means of a text label personalized as required, enabling rapid recognition of the associated device.

Programmable: thanks to the built-in clock, it is also possible (with integrated backup battery) to program delivery of commands at a set time, for example to automate opening and closing of complex industrial and commercial systems or for the creation of "scenarios".

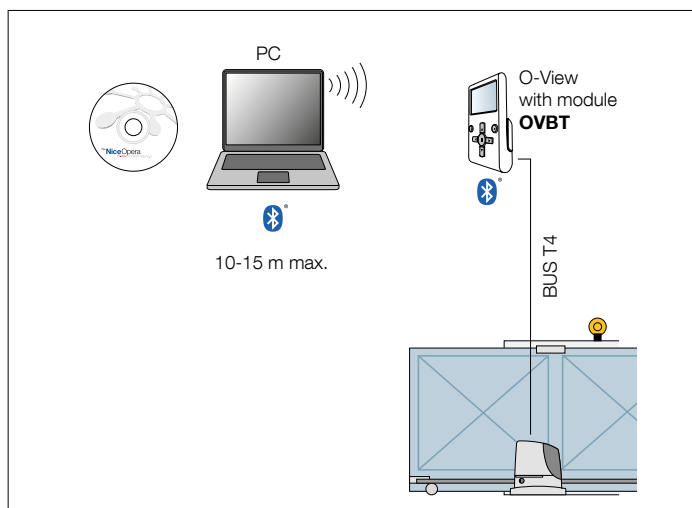
Safe: two password- protected levels. **Practical:** O-View is your portable office, and can be connected just when programming or for maintenance, or can be installed permanently on site to exploit all the benefits of local or remote centralized management.

OVB 	OVBGSM 	O-View Software Suite 
---	--	---

Code	Description
OVIEW/A	Unit for control, programming and diagnostics of devices equipped with BUS T4 connection
OVB	Bluetooth module for O-View and "O-View Software Suite" application for PC
OVBGSM	GSM module for O-View and "O-View Software Suite" application for PC

Technical specifications

Graphic interface	: LCD display 128 x 64 dots (46x29 mm); 2.2"
Operator input device	: joystick with 5 + 2 keys
Display/key lighting	: white light
Time and date display	: with backup battery (min. lifetime 10 years)
Maximum number of commands per hour	: 64
Event log	: storage capacity 400 events
Connection cable length (m)	: 2 (cable supplied); 700 (other cable)
Power supply	: supplied by devices on BUS T4 network
Absorbed current (mA)	: max. 20 (without accessories)
Insulation	: Class III
Housing protection rating (IP)	: 20
Working temp. (°C Min/Max)	: from -20° to +55°
Dimensions (mm)	: 107x61x20 h (with wall-mounted support: 125x70x32 h)
Weight (g)	: 75 (without cable)



OVBT

Bluetooth connection module for O-View interface.

"O-View Software Suite" enables connection via PC to O-View in the vicinity of the system, to intervene on the control units on the BUS T4 network. Maximum connection distance 15 m.

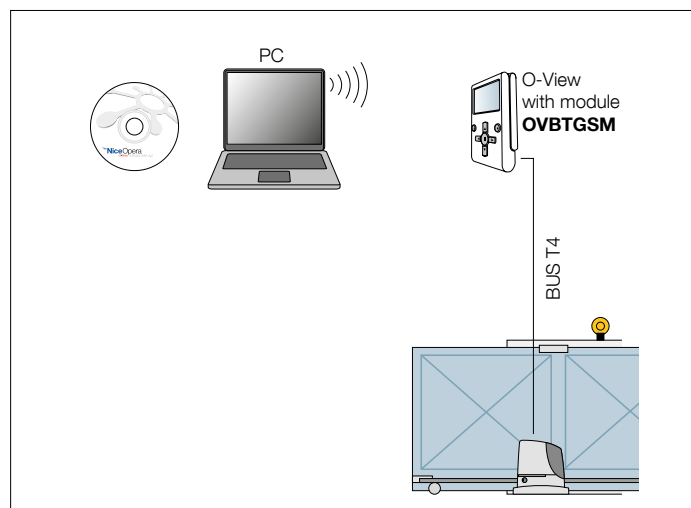
The interface of "O-View Software Suite" has been specially designed to enable rapid access to all parameters of the connected devices without the need for physical access, as well as quick diagnostics of malfunctions by consulting the event log, all the most practical and intuitive way possible.

The O-View control function has been expanded: in just one PC screen, all applications connected via BUS T4 can be controlled.

O-View Software Suite

This application, supplied with OVBT and OVBTGSM, as well as expanding the functions of O-View enables the creation of a database of installations with personal data of clients and configurations of each system, even on more complex versions.

By connecting to the site www.nice-service.com users can download the constantly updated firmware and software versions.



OVBTGSM

In addition to the benefits of the OVBT module, the single system or network of **system** can now be controlled via GSM by connecting O-View to the system via BUS T4.

A GPRS connection also enables **connection via the Internet to O-View** to obtain all management functions offered by the software from any location **with no need for presence on site**.

The user can remotely control the system via GSM, such as opening a gate by means of a phone call or by sending 4 different controls via SMS text message, with the security offered by entry of a unique password.

O-View Desktop version for PC:

- Processor: type AMD®/Intel® (500 MHz)
Recommended by Nice: type AMD®/Intel® (1 GHz)
- RAM: 128 MB Recommended by Nice: 256 MB
- Free space on disk: 280 MB Recommended by Nice: 512 MB
- Operating system: Windows® 98 SE or later
Recommended by Nice: Windows® 2000 or later
- Connection: Bluetooth®
- Graphics resolution: 800 x 600, 256 colours
- Disk drive: CD-Rom (required for installation).

Note – software installation includes installation of the program Microsoft®.NET Framework Redistributable 2.0.

Nice SpA
Oderzo TV Italy
info@niceforyou.com

www.niceforyou.com



Nice cares for the environment.
Using natural paper it avoids excessive
use of raw materials and forest exploitation.
Waste is reduced, energy is saved
and climate quality is improved.

